



**COMMERCIAL DOCKAGE**

**Annually:**

\$11.00 per foot per month plus \$.50 per passenger per trip\*

**Monthly:**

\$17.00 per foot per month plus \$.50 per passenger per trip\*

**Daily:**

\$2.75 per foot, no discounts

\* Applies to vessels with six (6) or more passengers.

*Commercial Agreements for vessels 150' and greater to be determined by the City of Fort Myers.*

*Annual Agreements require a security deposit equal to two (2) months dockage, paid in advance and refunded upon payment of final bill.*

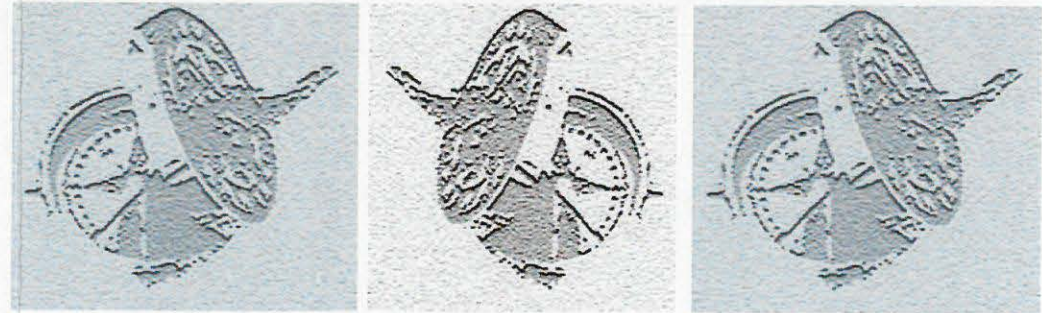
- All boats using dockage facilities must register with the Dockmaster's office.
- Use of the docks and facilities are at the discretion of the City of Fort Myers.

City of Fort Myers Yacht Basin  
1300 Lee Street  
Fort Myers, Florida 33901

Open 8:00-6:00 Daily  
(Fuel Dock Closes at 5:30)  
Closed Thanksgiving & Christmas Days

(239) 321-7080 Office  
(239) 332-6686 Fax

[www.cityftmyers.com/yachtbasin](http://www.cityftmyers.com/yachtbasin)  
E-mail us at: [yachtbasin@cityftmyers.com](mailto:yachtbasin@cityftmyers.com)



# CITY OF FORT MYERS YACHT BASIN



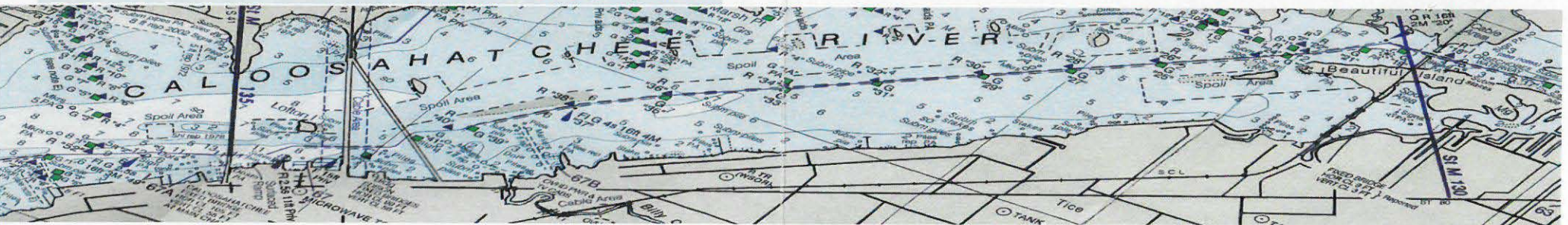
## RATE CARD

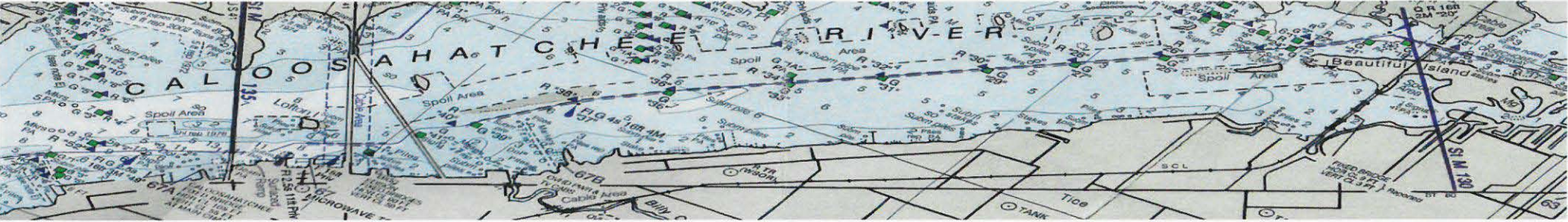
# 2018

Effective May 1, 2018



**Thank you for your interest in the Fort Myers Yacht Basin**

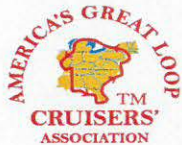




Reservations Appreciated

- **WiFi & pump-out** are available at your slip.
- **Liveaboard Fee:**  
 \$100.00 per vessel per month at marina or mooring.  
 \$125.00 per vessel per month at anchor.
- **Automobile Parking:**  
 \$45.00/month or \$5.00/night. Parking is assigned by staff.
- **Electricity:** Daily use = \$3.00/30 amp, \$6.00/50 amp, \$15.00/100 amp. Weekly, monthly & annual usage metered.
- **Annual Dockage:** Prepaid the 1st of each month.\*
- **Monthly Dockage:** Paid at time of arrival.\*
- **Dockage Fee:** Based on the registered/documented length. Rates based on 25 ft. minimum. Length of in-water dinghies over ten (10) feet will be added to the primary vessel's length.
- **Slips:** Designated as transient will not be rented for longer than one (1) month.
- **Facilities Usage:** \$10.00 per day per vessel.

All rates are subject to adjustment by marina management.



Save 10% on transient dockage and \$0.05 a gallon on fuel with SeaTow, BoatUS or AGLCA membership.



All vessels shall have Coast Guard approved heads and are required to use the marina's pump-out system.

\* \$25.00 late fee applied if not paid by the 15th day after due date.

## DOCKAGE RATES

May 1st - October 31st

November 1st - April 30th

1-6 Night(s)	\$ 2.50 per ft./night	\$ 2.75 per ft./night
Weekly = 7 Nights	\$ 1.40 per ft./night/wk.	\$ 1.60 per ft./night/wk.
Monthly = 30 Nights	\$ 14.00 per ft./month	\$ 17.00 per ft./month

Annual Rate \$ 11.00 per ft./month\*

## MOORING RATES

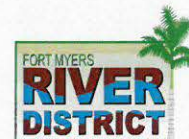
1-29 Night(s)	\$ 20.00 per day
Monthly	\$ 225.00 per month
Annual	\$ 175.00 per month*

- \* Security Deposit required for annual slip or mooring equal to one (1) month dockage paid in advance and refunded upon payment of final bill.
- \* Background/Credit Checks required for all new annual customers prior to arrival.

*The City of Fort Myers shall not be held responsible for any loss, damage or injury of any kind arising from the use or occupancy of the docks, floats and/or any Yacht Basin facilities.*



Available On-Site: Ship's Store, fresh fuel, laundry, showers, customer lounge. Beauty salon & yacht broker.



Located in the River District, you are walking distance to several restaurants, shops, clubs, theatre, art galleries and events.

[www.myriverdistrict.com](http://www.myriverdistrict.com)